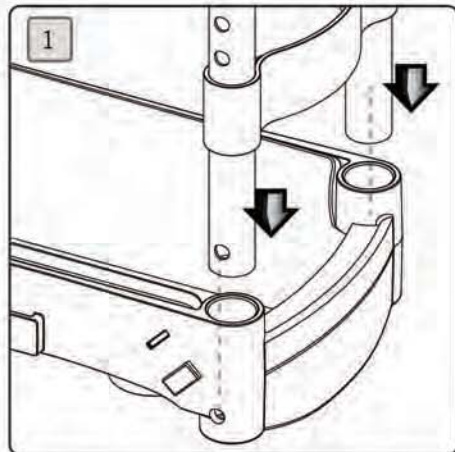


Assembly Instructions

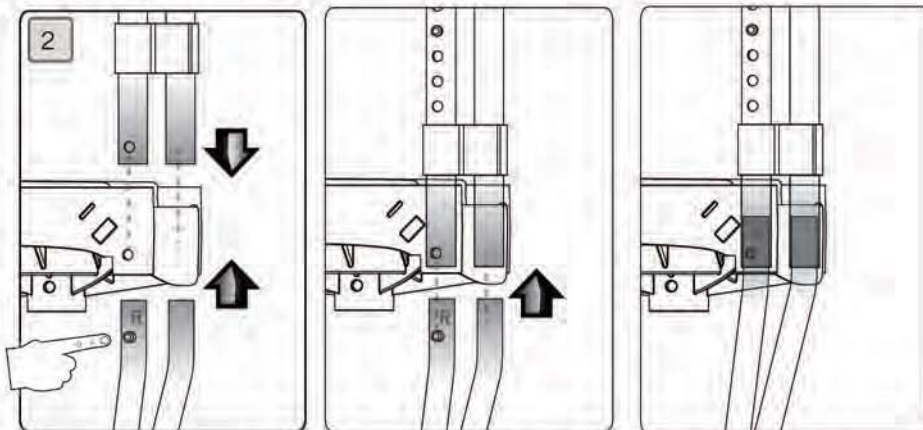


Video tutorials can be viewed on our website at:
www.iwalk-free.com/instruction-videos

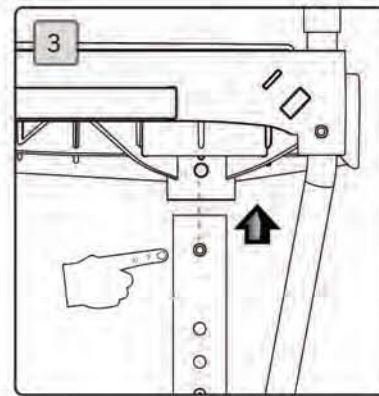
- a. Upper Assembly
- b. Knee Platform
- c. Lower Assembly
- d. Support Tubes
- e. Clamp Bolt and Nut
- f. Straps



Step 1 - With the Handle facing forward, insert the tubes of the Upper Assembly into the sockets of the Knee Platform. If the hole at the bottom of the Left tube does not align with the hole in the Platform, simply rotate the tube until it does.

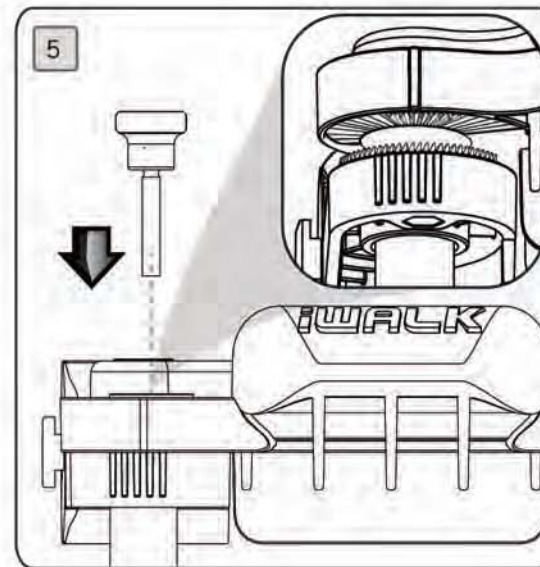
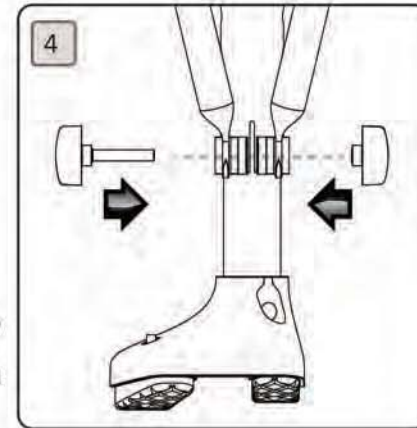


Step 2 - Identify the Right side Support Tube by the small "R" stamped near the top. Press in the small silver button and insert the Support Tube into the bottom of the Knee Platform socket until the button springs into the hole. Make sure the two tubes and the Knee Platform are securely locked together. Next, insert the Left Support Tube.



Step 3 - Attach the Lower Assembly to the Knee Platform by pressing in the silver button on the Height Adjustment Tube and inserting the tube into the socket of the Knee Platform. Tug on the tube to confirm that it is securely locked in.

Step 4 - Position the Clamp so it aligns between the ends of the support tubes. You can use gentle pressure to move the Support Tubes while you rotate the Clamp into position. Gently push the support tube ends and align all 4 holes, then insert the Clamp Bolt through the holes. Thread the nut onto the end of the bolt. Do not tighten completely yet.



Step 5 - Before attaching the Thigh Support to the Handle, note that there are raised "teeth" on the upper surface of each Thigh Support and on the lower surface of the Handle. These teeth must interlock to prevent rotation of the Thigh Supports when the crutch is in use.

Insert the Thumb Screw into the slot on either side of the Handle. Align the hole in the top of the Thigh Support with the threaded end of the Thumb Screw. Thread the Thumb Screw into the nut located below the surface of the Thigh Support. As you tighten, ensure that the interlocking teeth mesh correctly. Finish tightening the Thumb Screw by hand. Repeat on other side. Flex the Thigh Supports in and out to make sure they are secure.

Step 6 - Align the hole in the Strap T Lock Buckle with the raised "T" lock on the Thigh Support. Pull back on the buckle to lock it in. Repeat for the other side of the strap. To remove the buckle, simply push forward on the buckle until it releases. The Gray buckle should be located on the outside of your leg. Crutches ship configured for right leg use. To change to left leg use, simply remove and reverse the straps and rotate the foot 180 degrees.

Note - If one of the 3 straps has white Velcro on its end, install this strap at the front of the Knee Platform.

